

CANAG



FARM TECHNOLOGY



BALE WRAPPERS
SELF-LOADING TRAILERS
LOG LOADERS
PUSHERS
GRADERS
PLOWS



YIELD IN AGRICULTURE
IS THE COMBINATION
OF HUMAN HANDS AND NATURE'S BEST.
EVERY DAY FEEDING THE WORLD.



**Welcome
to a world
where products
are created only to fit
farmers and dairymen
requirements.**

We are a group of passionates, driven by agriculture and mechanic. All of us share the same path : building equipments that will last and that will be hassle-free for our users. Achieving such a goal is made possible by the usage of the best available technology and the will to manufcatured high-quality products, nothing else. Thank you.

The best criterias are quality and long-lasting results.

So we worked only toward that path.

HIGH DENSITY STEEL

High density steel provides 5 times the stiffness of regular steel and increases the lifespan by 3 times. The final result is a **lighter** equipment on the road and a **stronger** piece of equipment at work

LASER-CUT

Unbeatable precision of the laser-cut steel provides great features to the final assembly, such as a better overall stiffness, **exact positioning** of all parts and perfect alignment.

BAKED PAINT

The best way to protect your equipment throughout the years is total bonding between the steel and the paint and a hardness point that will not suffer from regular abrasion : the baked power paint reaches these standards. This hard polyester coating is cooked and litterally penetrates the metal for a final result about **100 times harder than regular lacquer paint.**



The best comments are the ones coming from you.

So we listened to farmers and producers like you.



OUR R&D IS MADE EASY

Since we've been developing products for dairyman and cattleman over the last decade, we first improve the features that were asked by the power users.

We then brought these machines and improvements at the field for repetitive trails...and sometimes failures.

Our thinking at CANAG FARM TECHNOLOGY is simple, the R&D is customer-driven first.

IMPROVEMENT IS ALSO MADE OF SCIENCE

The bale wrapping process implies chemical reaction and physical dynamics. These concepts are **easy to understand when the tools are made ready** to manage the yield.



At **CANAG FARM TECHNOLOGY**, we are dedicated to our market and customer base. So over the years, we improved our product and practices by integrating new technologies, new raw materials, new business habits and a steady customer support.



The technology behind the scene



AUTOMATIC BALE PUSH-OUT SYSTEM

The **RAM System** is a standard feature aboard all inline wrappers. No need to extract any money from your pocket for that feature. CANAG developed a light system that ends up the row with a center “ratchet” type pusher.



INDEPENDANT FRONT TRACTION WHEEL

The front traction wheels are hydraulically powered and independant in their movements, providing a total even traction in any given situation.

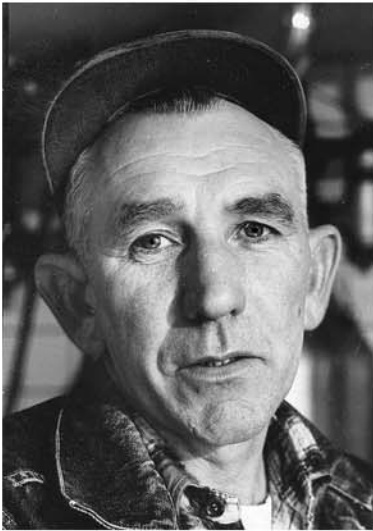
ALUMINUM TENSIONERS ONLY

The aluminum doesn't catch the heat the same way the steel does it, from this point we got a far away better control over the stretching of the plastic since these tensioners will not be affected by the “tacky”.



EASY SEQUENTIAL WRAPPING MANAGEMENT

All the inline wrappers equipped with automatic wrapping systems (TOPLINER, PROLINER and ALLLINER) use a simple sequential limit switch detection instead of a computerized closed system.



A complete line-up for the dairyman and the cattleman

Hay management and farm equipments

"After comparing the major brands prior to take any decision for the purchase of my first wrapper, and after 5 years of steady usage, I would make the same choice again"

JL Perron



STRAITLINER

IN-LINE ROUND BALE WRAPPER

- > 100% MANUAL over HYDRAULIC
- > FULL CONTROL AT ANY WRAPPING STEP
- > 14 HP SUBARU HYDRAULIC POWER UNIT
- > HYDRAULIC FORWARD AND BACKWARD
- > HYDRAULIC STEERING
- > HYDRAULIC UP & DOWN FRONT AXLE
- > 5-STICK JOYSTICK
- > HYDRAULIC TRACTION
- > HYDRAULIC OVER COMPRESSION CONTROL
- > INDEPENDANT STEADY TRACTION
- > BAKED POWDER PAINT
- > RAM SYSTEM PUSHER TYPE
- > 2 ALUMINIUM TENSIONERS - 30"
- > MAINTENANCE FREE BALE PUSHER
- > UP TO 100 BALES PER HOUR
- > 1 YEAR LIMITED WARRANTY

Easy to figure out from the tractor seat if the engine is running or not with this simple light button.



STRAITLINER



The best compaction and wrapping control of the industry!



Modulate speed at any moment in the process

YOU CAN INCREASE OR DECREASE THE NUMBER OF PLASTICS LAYERS AT ANY POINT.



Easy to operate with precision and control

UNIQUE LEVEL OF COMPACTION AND WRAPPING PRECISION WITH QUALITY FLOW VALVE AND SMOOTH HANDLING.



Lowest maintenance cost of the industry

STANDARD AND AMERICAN-MADE PARTS DIMINISHES THE NEED FOR ONE-OF-A-KIND PARTS AND DEPENDANCE TO THE MANUFACTURER.



Double-plastic on seam at anytime

SOMETIMES, THIS IS WHAT YOU NEED.



Independant hydraulic traction wheels

UNIQUE DRIVING SYSTEM PROVIDING CONSTANT TRACTION ON VERTICAL AND HORIZONTAL AXIS UP TO 12°

SPECS & INFO

Width	101"
Height :	9' 4"
Length :	15' 3"
Weight :	3500 lbs

OPTIONS

Night Shift Working Lights Kit
Road Lights Kit
4Tensioners kit (2 additional)

Picture as indication only

- 100% MANUAL OVER HYDRAULIC
- FULL CONTROL AT ANY WRAPPING STEP
- 14 HP SUBARU HYDRAULIC POWER UNIT
- HYDRAULIC FORWARD AND BACKWARD
- HYDRAULIC STEERING
- HYDRAULIC UP & DOWN FRONT AXLE
- 5-STICK JOYSTICK
- HYDRAULIC FRONT TRACTION WHEEL
- COMPRESSION CONTROL
- STEADY TRACTION
- BAKED POWDER PAINT
- FULL PUSHER TYPE
- 2 ALUMINIUM TENSIONERS - 30"
- RAM AUTOMATIC PUSH-OUT SYSTEM
- MAINTENANCE FREE BALE PUSHER
- UP TO 100 BALES PER HOUR
- 1 YEAR LIMITED WARRANTY



**AUTOMATIC
PUSH-OUT BALE SYSTEM**



PRINTED IN CANADA

CANAG



CANAG FARM TECHNOLOGY

QUEBEC, CANADA
1.866.362.1688
www.canagfarmtechnology.com
info@canagfarmtechnology.com

TOPLINER

IN-LINE ROUND BALEWRAPPER

Simple onboard control using sequential limit switches instead of a proprietary full computerized control.



SUBARU

Subaru 14HP power unit

TOPLINER



The best compaction and wrapping control of the industry!



Modulate speed at any moment in the process

YOU CAN INCREASE OR DECREASE THE NUMBER OF PLASTICS LAYERS AT ANY POINT.



Remote control for 1-man operation

READY FOR HAY CONTRACTORS AND ONE(1) MAN OPERATORS.



Lowest maintenance cost of the industry

STANDARD AND AMERICAN-MADE PARTS DIMINISHES THE NEED FOR ONE-OF-A-KIND PARTS AND DEPENDANCE TO THE MANUFACTURER.



Double-plastic on seam at anytime

SOMETIMES, THIS IS WHAT YOU NEED.



Independant hydraulic traction wheels

UNIQUE DRIVING SYSTEM PROVIDING CONSTANT TRACTION ON VERTICAL AND HORIZONTAL AXIS UP TO 12°

SPECS & INFO

Width	101"
Height :	9' 4"
Length :	15' 3"
Weight :	3700 lbs

OPTIONS

Night Shift Working Lights Kit
Road Lights Kit

Picture as indication only

- 100% AUTOMATIC over HYDRAULIC**
- 14 HP SUBARU HYDRAULIC POWER UNIT**
- FULL CONTROL AT ANY WRAPPING STEP**
- HYDRAULIC FORWARD AND BACKWARD**
- REMOTE START AND STOP**
- REMOTE DOUBLE-PLASTIC**
- HYDRAULIC UP & DOWN FRONT AXLE**
- HYDRAULIC STEERING**
- 5-STICK JOYSTICK**
- BAKED POWDER PAINT**
- HYDRAULIC FRONT TRACTION WHEEL**
- RAM SYSTEM PUSHERTYPE**
- 2 ALUMINIUM TENSIONERS - 30"**
- FULLY UPGRADABLE TO PROLINER**
- AUTOMATIC PULL-OUT SYSTEM**
- MAINTENANCE FREE BALE PUSHER**
- UP TO 100 BALES PER HOUR**
- 1 OPERATOR CONFIGURATION**
- 1 YEAR LIMITED WARRANTY**



AUTOMATIC PUSH-OUT BALE SYSTEM



PRINTED IN CANADA



CANAG FARM TECHNOLOGY

QUEBEC, CANADA
1.866.362.1688
www.canagfarmtechnology.com
info@canagfarmtechnology.com

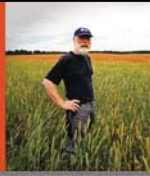


PROLINER

IN-LINE ROUND BALE WRAPPER



PROLINER



The best compaction and wrapping control of the industry!



Modulate speed at any moment in the process

YOU CAN INCREASE OR DECREASE THE NUMBER OF PLASTICS LAYERS AT ANY POINT.



Remote control for 1-man operation

READY FOR HAY CONTRACTORS AND ONE(1) MAN OPERATORS.



Lowest maintenance cost of the industry

STANDARD AND AMERICAN-MADE PARTS DIMINISHES THE NEED FOR ONE-OF-A-KIND PARTS AND DEPENDANCE TO THE MANUFACTURER.



Double-plastic on seam at anytime

SOMETIMES, THIS IS WHAT YOU NEED.



Independant hydraulic traction wheels

UNIQUE DRIVING SYSTEM PROVIDING CONSTANT TRACTION ON VERTICAL AND HORIZONTAL AXIS UP TO 12°

SPECS & INFO

Width 101"

Height : 9'4"

Length : 15' 3"

Weight : 3700 lbs

OPTIONS

Night Shift Working Lights Kit

Road Lights Kit

Picture as indication only

BALE SIZE 4' TO 5'

BALE DIAMETER 4' TO 5'6"

100% AUTOMATIC OVER HYDRAULIC

FULL CONTROL AT ANY WRAPPING STEP

HYDRAULIC FORWARD AND BACKWARD

REMOTE START & STOP

REMOTE DOUBLE PLASTIC

HYDRAULIC STEERING

5-STICK JOYSTICK

BAKED POWDER PAINT

HYDRAULIC FRONT TRACTION WHEEL

RAM SYSTEM PUSHER TYPE

2 ALUMINUM TENSIONERS - 30"

MAINTENANCE - FREE BALE PUSHER

UP TO 100 BALES PER HOUR

1 OPERATOR CONFIGURATION

2 YEARS LIMITED WARRANTY

SUBARU 14HP POWER UNIT



**AUTOMATIC
PUSH-OUT BALE SYSTEM**



PRINTED IN CANADA



CANAG FARM TECHNOLOGY

QUEBEC, CANADA
1.866.362.1688
www.canagfarmtechnology.com
info@canagfarmtechnology.com

ALLLINER

IN-LINE ROUND AND SQUARE BALE WRAPPER



Look at all the details available from this pictures System for plastic rolls, Driving wheel, Baked powder paint, Precision assembling, Stainless steel bolts and nuts.



Remote controlled



IN-LINE ROUND AND SQUARE BALE WRAPPER

ALLLINER



The best compaction and wrapping control of the industry!



Modulate speed at any moment in the process

YOU CAN INCREASE OR DECREASE THE NUMBER OF PLASTICS LAYERS AT ANY POINT.



Remote control for 1-man operation

READY FOR HAY CONTRACTORS AND ONE(1) MAN OPERATORS.



Lowest maintenance cost of the industry

STANDARD AND AMERICAN-MADE PARTS DIMINISHES THE NEED FOR ONE-OF-A-KIND PARTS AND DEPENDANCE TO THE MANUFACTURER.



Double-plastic on seam at anytime

SOMETIMES, THIS IS WHAT YOU NEED.



Independant hydraulic traction wheels

UNIQUE DRIVING SYSTEM PROVIDING CONSTANT TRACTION ON VERTICAL AND HORIZONTAL AXIS UP TO 12°

SPECS & INFO

Width 101"
 Height : 9' 4"
 Length : 15' 3"
 Weight : 3700 lbs

OPTIONS

Road Lights Kit

POSSIBLE BALE DIMENSIONS:

4'-5½' 4'-5' 4'-5½' 4'-5'

Picture as indication only

- 100% **AUTOMATIC** over **HYDRAULIC**
- 14 HP SUBARU HYDRAULIC POWER UNIT
- HYDRAULIC FORWARD AND BACKWARD
- FULL CONTROL AT ANY WRAPPING STEP
- REMOTE HYDRAULIC STEERING**
- REMOTE UP & DOWN FRONT AXLE**
- REMOTE DOUBLE PLASTIC**
- REMOTE BALE EJECTION**
- 5-STICK JOYSTICK
- BAKED POWDER PAINT
- HYDRAULIC FRONT TRACTION WHEEL**
- REMOTE START AND STOP
- DIGITAL BALE COUNTER
- FULL PUSHER TYPE
- PLASTIC WATCH SYSTEM**
- NIGHT SHIFT LIGHTS**
- ENGINE "ON/OFF" LIGHT
- 2 ALUMINIUM TENSIONERS - 30"
- RAM AUTOMATIC PUSHER SYSTEM**
- MAINTENANCE-FREE BALE PUSHER
- UP TO 120 BALES PER HOUR
- 1 OPERATOR CONFIGURATION
- 2 YEARS LIMITED WARRANTY



AUTOMATIC PUSH-OUT BALE SYSTEM



PRINTED IN CANADA



CANAG FARM TECHNOLOGY

QUEBEC, CANADA
 1.866.362.1688
www.canagfarmtechnology.com
info@canagfarmtechnology.com

SLT10 SLT12 SLT16

SELF-LOADING **ROUND** BALETTRAILER



The perfect tool for any one-man operation



State of the art equipment for round bale handling. Patented loading arm for turning and quick loading of the bales without stopping.

Control box with automatic return of the bale ram on automatic models.

With several years of experience in hauling silage and dry hay bales, we innovate again by offering the auto-load square bales handler, the fastest and most versatile of the industry.

Choice of manual or automatic control. Handles bales of 32" x 36", 36" x 48", or 48" x 48" up to 8' in length, in silage or dry hay.



SELF-LOADING ROUND BALE TRAILER

SLT10



The best companion for any one-man operation



MODEL	SLT10		SLT12		SLT16	
Total capacity 12 tons¹ (GVWR):	Standards tires 16.5L16.1 with wheels W14C16.1 (280 x 404 mm)				---	
Total capacity 16 tons¹ (GVWR):	---		Optionals tires 21.5L16.1 with wheels W16C16.1 (403 x 404 mm)		Optionals tires 21.5L16.1 with wheels W16C16.1 (403 x 404 mm)	
Total capacity 20 tons (GVWR):	---		---		Optionals tires 21.5L16.1 with wheels W16C16.1 (403 x 404 mm)	
Total capacity 20 tons (GVWR)	---		---		Optionals tires 500/45-22.5 with W16C16.1 (403 x 404 mm)	
Sides adjustable to bales diameter:	4' to 5 1/2' std. (6' opt.) • 1.2 m to 1.7 m std. (1.8 m opt.)					
Bales length:	4' to 5 1/2' std. • 1.2 m to 1.7 m std.					
Wheels (number of bolts):	8 bolts					
Number of bales 4' (1.2 m) long:	Std. 10 (2 rows of 5 bales)		Std. 12 (2 rows of 6 bales)		Std. 16 (2 rows of 8 bales)	
	opt. add 1 row of 4 bales		opt. add 1 row of 5 bales		opt. add 1 row of 7 bales	
Number of bales 5' (1.5 m) long:	Std. 8 (2 rows of 4 bales)		Std. 10 (2 rows of 5 bales)		Std. 12 (2 rows of 7 bales)	
	opt. add 1 row of 3 bales		opt. add 1 row of 4 bales		opt. add 1 row of 6 bales	
Overall length:	27'6" • 8.38 m		31'10" • 9.7 m		39'10" • 12.14 m	
Overall width:	8'6" to 10'0" • 2.59 m to 3.05 m					
Platform height:	44 5/8" • 1 133 mm (std. tires)		45 1/2" • 1 156 mm (std. tires)		47 1/4" • 1 200 mm (std. tires)	
	---		47 1/4" • 1 200 mm (opt. tires)		47 1/4" • 1 200 mm (opt. tires)	
Dumping angle:	35°					
Tread width (c/c):	83 1/2" • 2 121 mm		80 1/2" • 2 045 mm			
Hitch weight (empty):	1 500 lb approx. • 681 kg approx.		1 800 lb approx. • 818 kg approx.		2 800 lb approx. • 1 270 kg approx.	
Swivel hitch:	Standard					
Control box with automatic return of bale ram:	Not available	Standard	Not available	Standard	Not available	Standard
Axle:	Tandem					
Hub (capacity):	8 000 lb • 3 636 kg		10 000 lb • 4 545 kg			
Spindles (diameter):	3" • 73 mm		3 1/4" • 83 mm			
Recommended tractor:	80 HP		100 HP		125 HP	
Total weight:	6 500 lb approx.		7 500 lb approx.		10 500 lb approx.	
	(2 948 kg approx.)		(3 402 kg approx.)		(4 763 kg approx.)	

PRINTED IN CANADA

Picture as indication only

CANAG



CANAG FARM TECHNOLOGY

QUEBEC, CANADA
1.866.362.1688
www.canagfarmtechnology.com
info@canagfarmtechnology.com



TWISTER I

INDIVIDUAL ROUND BALE WRAPPER

HAY MANAGEMENT EQUIPMENTS



INDIVIDUAL ROUND BALE

TWISTER 100



The best compaction and wrapping control of the industry!



30" aluminum tensioners

DON'T HASSLE WITH LOW QUALITY TENSIONER THAT WILL INDUCE BREAKOUT AND POUR STRETCHING CONTROL.



Cut and Hold System

READY FOR HAY CONTRACTORS AND ONE(1) MAN OPERATORS.



Smooth hydraulic table lift-up

Lowest maintenance cost of the industry

STANDARD AND AMERICAN-MADE PARTS DIMINISHES THE NEED FOR ONE-OF-A-KIND PARTS AND DEPENDANCE TO THE MANUFACTURER.

100% MANUAL over HYDRAULIC

EXTENSION CABLE

TRACTOR HYDRAULIC HOOK-UP

MECHANICAL CUT & HOLD SYSTEM

HYDRAULIC POWER UNIT OPTION

1 ALUMINIUM TENSIONER - 30"

AUTOMATIC FALL-OUT

PLASTIC-CUTTER

LIGHT AND EASY ON TRANSPORTATION

ONE OF THE FASTEST

4' AND 5' ROUND BALES

LOW MAINTENANCE

TESTED TECHNOLOGY

SPECS & INFO

Width	95"
Height :	54"
Length :	96"
Weight :	1100 lbs

OPTIONS

Road Lights Kit
Night Shift Lights Kit

Picture as indication only



PRINTED IN CANADA



CANAG FARM TECHNOLOGY

QUEBEC, CANADA
1.866.362.1688
www.canagfarmtechnology.com
info@canagfarmtechnology.com

CANAG



FARM TECHNOLOGY

HAY MANAGEMENT
FORESTRY LOADERS
GRAIN AND MANURE PUSHERS
GRADERS AND SNOW PLOWS



STRATLINER

MANUAL OVER HYDRAULIC
RAM AUTOMATIC PUSH BALE SYSTEM™
HYDRAULIC STEERING
INDEPENDANT FRONT TRACTION WHEELS



SLRAILER

PATENTED FORK
10, 12 OR 16 BALES
35° DUMPING ANGLE
LEFT AND RIGHT LATERAL SHIFTING



PROLINER

ROUND BALE
FULL HYRAULIC
REMOTE CONTROL
COMPACTION REACTION SYSTEM™
RAM AUTOMATIC PUSH BALE™

ALLLINER

ROUND + SQUARE BALES
FULL HYRAULIC
REMOTE CONTROL
COMPACTION REACTION SYSTEM™
RAM AUTOMATIC PUSH BALE™



	STRAITLINER	TOPLINER	PROLINER	ALLLINER
ROUND BALE	●	●	●	●
SQUARE BALE				●
MANUAL OVER HYDRAULIC	●			
100% AUTOMATIC over HYDRAULIC		●	●	●
14 HP SUBARU HYDRAULIC POWER UNIT	●	●	●	●
HYDRAULIC FORWARD AND BACKWARD	●	●	●	●
FULL CONTROL AT ANY WRAPPING STEP	●	●	●	●
REMOTE HYDRAULIC STEERING			●	●
REMOTE UP & DOWN FRONT AXLE			●	●
REMOTE DOUBLE PLASTIC		●	●	●
REMOTE BALE EJECTION			●	●
5-STICK JOYSTICK	●	●	●	●
BAKED POWDER PAINT	●	●	●	●
HYDRAULIC FRONT TRACTION WHEEL	●	●	●	●
REMOTE START AND STOP		●	●	●
DIGITAL BALE COUNTER			●	●
PLASTIC WATCH SYSTEM			●	●
NIGHT SHIFT LIGHTS			●	●
ENGINE "ON/OFF" LIGHT	●	●	●	●
2 ALUMINIUM TENSIONERS - 30"	●	●	●	●
RAM AUTOMATIC PUSHER SYSTEM	●	●	●	●
MAINTENANCE-FREE BALE PUSHER	●	●	●	●
UP TO 120 BALES PER HOUR		●	●	●
REMOTE DOUBLE PLASTIC		●	●	●
1 OPERATOR CONFIGURATION		●	●	●
1 YEAR LIMITED WARRANTY	●	●		
2 YEARS LIMITED WARRANTY			●	●
OPTIONAL 4 TENSIONERS KIT	●	●	●	●
OPTIONAL ROAD LIGHTS KIT	●	●	●	●
INDEPENDANT TRACTION WHEELS	●	●	●	●
2015 U.S. RETAIL PRICE	30 750	32 740	36 540	42 900



CANAG



FARM TECHNOLOGY



www.canagfarmtechnology.com

FORESTPRO I

LOG LOADER - 9 1/2' BOOM

FARM MANAGEMENT EQUIPMENTS

FORESTPRO



Manufactured to last.
Find an inheritant for that machine.



Best core beam construction of the market

Nothing can provide more stiffness facing vertical and horizontal pressures than a 45-degree beam.



Ready for the worst

Independent tandem axle allows driving slowly without inflicting inappropriate movements to the load.



Swivel pull-bar

It's easy to understand why it means a lot anywhere and anytime you are moving this piece of equipment.



Totally versatile

Just imagine how versatile can the FORESTPRO be when it's time for other taskings using grapple, bakhoe or auger.



Heavy duty swivel parts

All swivel parts are conceived with thick walls and high diameter angle parts. Built stronger will last longer.

16" adjustable pull-bar

9'6" boom

CHT 400 - 5X stronger than regular steel

Protected hydraulic cylinder

Adjustable rear wheelset

5 different options

High load capabilities

Ready for paved or unpaved road

Hydraulic stabilizing arms

Frain built around a 45 degree beam

Full "joystick" hydraulic control

Ready for VTT and tractor

SPECS & INFO

Length	12'
Width	62"
Height	64"
Arm full length	9'6"
Grapple openings	30" / 3"
Total weight	1330 lbs
Maximum on axles	10 000 lbs
Boom max. leverage	700 lbs
Wheel and tire	26/12/12

OPTIONS

Winch (1/4" cable) (option)	85' - 4000 lbs
Hydraulic unit (option)	7 HP
Bucket (option)	12" X 20"
Worm (option)	6"

Picture as indication only



CANAG
FARM TECHNOLOGY

QUEBEC, CANADA
1.866.362.1688
www.canagfarmtechnology.com
info@canagfarmtechnology.com

PRINTED IN CANADA

CANAG



FARM TECHNOLOGY



FORESTPRO II

LOG LOADER - 11' BOOM

www.canagfarmtechnology.com



FARM MANAGEMENT EQUIPMENTS

FORESTPRO II



Manufactured to last.
Find an inheritant for that machine.



Best core beam construction of the market

Nothing can provide more stiffness facing vertical and horizontal pressures than a 45-degree beam.



Ready for the worst

Independent tandem axle allows driving slowly without inflicting inappropriate movements to the load.



Swivel pull-bar

It's easy to understand why it means a lot anywhere and anytime you are moving this piece of equipment.



Totally versatile

Just imagine how versatile can the FORESTPRO be when it's time for other taskings using grapple, bakhoe or auger.



Heavy duty swivel parts

All swivel parts are conceived with thick walls and high diameter angle parts. Built stronger will last longer.

16" adjustable pull-bar

11" boom

CHT 400 - 5 stronger than regular steel

Upper position protected hydraulic cylinder

Adjustable rear wheelset

5 different options

High load capabilities

Ready for paved or unpaved road

Hydraulic stabilizing arms

Frame built around a 45 degree beam

Full "joystick" hydraulic control

Ready for VTT and tractor

SPECS & INFO

Length	15' 6"
Width	62"
Height	66"
Arm full length	11'
Grapple openings	36"/4"
Total weight	1600 lbs
Maximum on axles	20 000 lbs
Boom max. leverage	900 lbs
Wheel and tire	11L15

OPTIONS

Winch (1/4" cable) (option)	85' - 4000 lbs
Hydraulic unit (option)	7 HP
Bucket(option)	12" or 20"
Worm(option)	6"

Picture as indication only



CANAG
FARM TECHNOLOGY

QUEBEC, CANADA
1.866.362.1688
www.canagfarmtechnology.com
info@canagfarmtechnology.com

PRINTED IN CANADA



PUSHERPRO

SNOW, GRAVEL & MATERIAL

FARM MANAGEMENT EQUIPMENTS



SKIDSTEER HYDRAULIC ANGLE PLOW

PUSHERPRO



The best working horse
for hard tasking



VERSATILE AND POWERFUL
Do you really need something else.

The CANAG B&P serie offers more than 20 different configurations from the single pusher up to plows equipped with side hydraulic wings.

ADJUSTABLE BLADE ANGULATION

CHT 400 STEEL - 5X MORE STRONGER

1 HYDRAULIC OUTLET

FULL TRIPPING SYSTEM

ADJUSTABLE CROSSOVER RELIEF

LATTERAL FLOATING OF THE BLADE

BAKED POWER PAINT

STEADY CONTACT WITH THE GROUND

OPTIONAL FOR QUICK ATTACH



PUSHERPRO

Hydraulic angulation pusher blades

	PUSHERPRO 525	PUSHERPRO 625	PUSHERPRO 725
Width :	5'	6'	7'
Height :	25"	25"	25"
weight :	450 lbs	500 lbs	550 lbs



OPTIONS

- SOFT drive mechanical steel trip edge
- Teflon cutting edge 3/4" x 6"
- Carbide cutting edge
- Non standard colour
- Quick attach

Picture as indication only



PRINTED IN CANADA

CANAG



CANAG FARM TECHNOLOGY

QUEBEC, CANADA
1.866.362.1688

www.canagfarmtechnology.com
info@canagfarmtechnology.com